



TRANSFORMER COMMODITIES INDICES

MONTHLY

STATISTICS

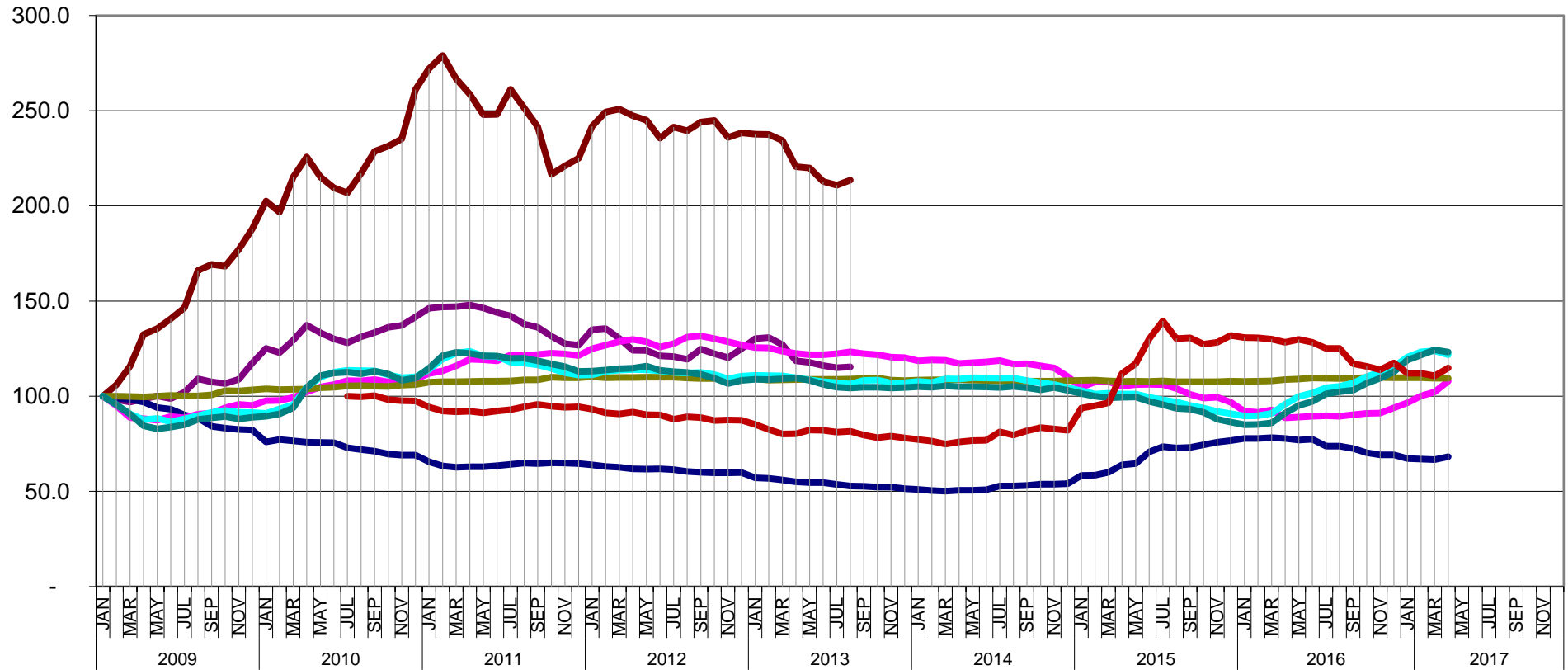
FOR THE PERIOD

JAN 2009 -APR 2017

PUBLICATION DATE: 03/JUL/2017

T&D EUROPE									
TRANSFORMER COMMODITY INDICES									
BASE JAN-2009 = 100 [Al, Cu, Goes, Oil, Paper, Cold Steel, Hot Steel]									
BASE JUL-2010 = 100 [Goes+]									
		ALUMINIUM	COPPER	CONV. GOES	GOES+	MIN. OIL	PAPER	COLD STEEL	HOT STEEL
2009	JAN	100.0	100.0	100.0		100.0	100.0	100.0	100.0
	FEB	98.1	106.0	99.1		95.0	100.0	95.6	95.5
	MAR	96.9	115.9	98.4		88.7	99.8	90.7	90.5
	APR	98.6	132.5	96.9		88.2	99.6	87.7	84.5
	MAY	100.2	135.5	94.0		87.4	100.0	88.3	82.8
	JUN	98.8	140.7	93.2		89.3	100.4	86.6	83.8
	JUL	102.1	146.5	90.1		88.6	100.1	88.0	85.0
	AUG	109.2	166.1	88.7		90.6	100.1	89.7	87.8
	SEP	107.5	169.2	84.2		91.0	100.7	91.5	88.6
	OCT	106.7	168.2	83.2		93.9	102.9	92.5	89.4
	NOV	108.9	177.2	82.5		95.7	102.8	91.5	88.1
	DEC	117.5	187.9	82.2		95.2	103.3	91.3	88.8
2010	JAN	125.2	202.5	76.0		97.6	103.9	91.0	89.4
	FEB	122.9	196.7	77.3		97.7	103.5	93.3	90.7
	MAR	129.4	215.1	76.5		99.3	103.7	95.4	93.8
	APR	137.3	225.6	75.9		102.3	103.7	104.7	104.5
	MAY	133.3	215.2	75.7		104.8	104.4	110.0	110.8
	JUN	130.1	209.5	75.6		106.2	104.8	112.7	112.2
	JUL	128.0	206.8	72.9	100.0	108.2	105.3	113.5	112.6
	AUG	131.2	217.1	71.9	99.7	108.0	105.5	113.5	111.8
	SEP	133.5	228.6	71.1	100.3	108.8	105.3	113.3	113.2
	OCT	136.1	231.4	69.7	98.1	107.5	105.1	111.2	111.6
	NOV	137.2	235.1	69.1	97.6	107.9	105.8	109.7	108.4
	DEC	141.6	261.1	69.1	97.4	108.8	106.2	110.1	109.5
2011	JAN	146.1	272.1	65.6	94.3	111.9	107.3	114.0	114.7
	FEB	146.9	279.0	63.4	92.2	113.3	107.6	119.5	121.4
	MAR	147.0	266.7	62.7	91.9	116.0	107.6	122.6	123.0
	APR	147.9	258.6	62.9	92.1	119.5	107.8	123.6	122.5
	MAY	146.3	247.9	62.9	91.3	119.2	107.9	121.1	121.2
	JUN	144.0	248.0	63.4	92.2	118.5	107.9	120.9	121.0
	JUL	142.2	261.3	64.1	92.9	121.6	108.0	117.9	119.8
	AUG	137.9	251.3	64.8	94.5	121.2	108.6	117.3	120.0
	SEP	136.1	241.5	64.7	95.7	121.9	108.6	116.5	118.6
	OCT	131.5	216.5	65.0	94.7	122.6	110.0	114.5	116.9
	NOV	127.5	220.9	64.9	94.2	122.2	109.8	112.3	115.5
	DEC	126.7	225.0	64.6	94.4	121.4	109.7	111.0	113.1
2012	JAN	134.9	241.8	63.9	93.1	124.9	110.3	111.2	113.2
	FEB	135.4	249.3	63.1	91.2	126.8	109.7	113.1	113.7
	MAR	130.4	250.8	62.7	90.6	128.7	109.8	113.8	114.5
	APR	124.2	247.3	61.9	91.7	129.8	109.8	114.0	114.8
	MAY	124.1	245.0	61.7	90.3	128.6	109.9	113.9	115.9
	JUN	121.3	235.6	61.8	90.2	125.9	109.9	113.3	113.5
	JUL	120.9	241.3	61.4	88.0	127.5	110.0	112.5	112.9
	AUG	119.5	239.4	60.5	89.2	131.0	109.5	112.2	112.5
	SEP	124.7	244.1	60.1	88.8	131.6	109.2	112.4	111.5
	OCT	122.4	244.8	59.8	87.2	130.2	109.3	111.3	109.5
	NOV	120.2	235.9	59.8	87.5	128.5	109.2	109.1	106.7
	DEC	125.0	238.3	59.9	87.3	126.9	109.2	110.6	108.3
2013	JAN	130.2	237.6	57.1	85.2	125.5	109.1	110.9	108.9
	FEB	130.8	237.5	56.8	82.5	125.4	108.5	110.9	108.7
	MAR	127.0	234.2	56.0	80.1	123.5	108.5	110.7	109.1
	APR	118.6	220.6	55.1	80.2	122.5	108.8	109.7	109.6
	MAY	117.7	219.9	54.6	82.2	121.7	108.9	108.6	108.3
	JUN	116.0	212.8	54.6	82.1	121.8	108.8	107.6	106.2
	JUL	115.0	210.8	53.6	81.1	122.3	108.9	107.1	104.8
	AUG	115.3	213.5	52.9	81.6	123.3	109.0	106.4	104.3
	SEP			52.7	79.6	122.3	109.3	108.3	104.7
	OCT			52.3	78.3	121.8	109.5	108.4	104.7
	NOV			52.3	79.1	120.6	108.4	107.0	104.3
	DEC			51.4	78.0	120.2	108.2	107.1	104.6
2014	JAN			51.1	77.2	118.6	108.5	107.8	105.0
	FEB			50.5	76.4	119.0	108.6	107.3	104.7
	MAR			50.1	74.9	118.8	108.7	109.1	105.4
	APR			50.6	76.0	117.2	108.7	109.0	105.0
	MAY			50.7	76.7	117.6	108.4	109.7	105.0
	JUN			50.9	76.8	118.0	108.3	109.6	104.8
	JUL			52.9	81.2	118.7	108.1	109.5	104.6
	AUG			52.8	79.6	116.9	108.1	109.5	105.1
	SEP			53.0	81.8	117.0	107.9	108.2	104.4
	OCT			53.8	83.5	116.0	107.9	107.1	103.3
	NOV			53.8	82.8	114.8	107.9	106.1	104.6
	DEC			54.0	82.0	110.3	108.2	104.5	103.1
2015	JAN			58.3	93.7	104.7	108.3	103.0	101.4
	FEB			58.4	95.0	107.5	108.4	101.2	99.9
	MAR			60.0	96.5	107.7	108.1	101.5	99.2
	APR			63.9	111.9	105.3	107.8	101.1	99.4
	MAY			64.7	117.1	106.1	107.9	101.0	99.5
	JUN			70.8	130.1	106.2	107.7	99.4	97.2
	JUL			73.5	139.6	106.1	108.0	98.0	95.6
	AUG			72.7	130.3	104.0	107.7	96.9	93.6
	SEP			73.1	130.7	101.0	107.7	95.1	93.2
	OCT			74.5	127.3	99.1	107.6	93.8	91.5
	NOV			75.9	128.3	99.5	107.6	92.0	88.0
	DEC			76.7	131.8	96.7	107.9	90.9	86.3
2016	JAN			77.8	130.8	92.1	107.8	89.6	85.0
	FEB			77.8	130.6	91.6	107.9	89.7	85.1
	MAR			78.2	130.0	92.8	108.0	90.9	85.9
	APR			77.8	128.4	88.6	108.8	95.8	91.1
	MAY			77.0	129.8	89.0	109.0	99.9	95.1
	JUN			77.4	128.2	89.4	109.5	101.6	97.2
	JUL			73.8	125.1	89.8	109.4	104.4	101.2
	AUG			73.8	125.1	89.5	109.3	105.1	102.3
	SEP			72.6	117.1	90.2	109.4	106.9	103.2
	OCT			70.3	115.6	91.0	109.8	110.2	106.8
	NOV			69.2	113.9	91.1	109.9	112.6	109.5
	DEC			69.1	117.5	93.9	109.7	115.5	112.8
2017	JAN			67.3	112.0	96.5	109.8	120.6	119.0
	FEB			67.0	112.0	100.2	109.7	123.3	121.7
	MAR			66.6	110.6	102.3	109.5	123.8	124.3
	APR			68.2	114.8	107.8	109.5	121.8	123.2
	MAY								
	JUN								
	JUL								
	AUG								
	SEP								
	OCT								
	NOV								
	DEC								
NOTES	1. Figures in red font are provisional								
	2. Figures in brown font have been revised due to revised figures from some Member countries								
SOURCE	3. Following a mistake detected during an internal routine audit for an input to the GOES+ index, the values and corresponding graph have been amended.								
	4. Cu & Al : We have stopped publishing these indices after December 2012, as information is readily available from other sources.								
Belgium (AGORIA), France (GIMELEC, INSEE, FIM), Germany (DEL_SBA) Italy (CAMERA DI COMMERCIO, ANIE), Netherlands (CBS), Spain (AFBEL) UK (OFFICE FOR NATIONAL STATISTICS)									

T&D EUROPE
TRANSFORMER COMMODITIES INDICES
 BASIS 2009 = 100 (except GOES+)

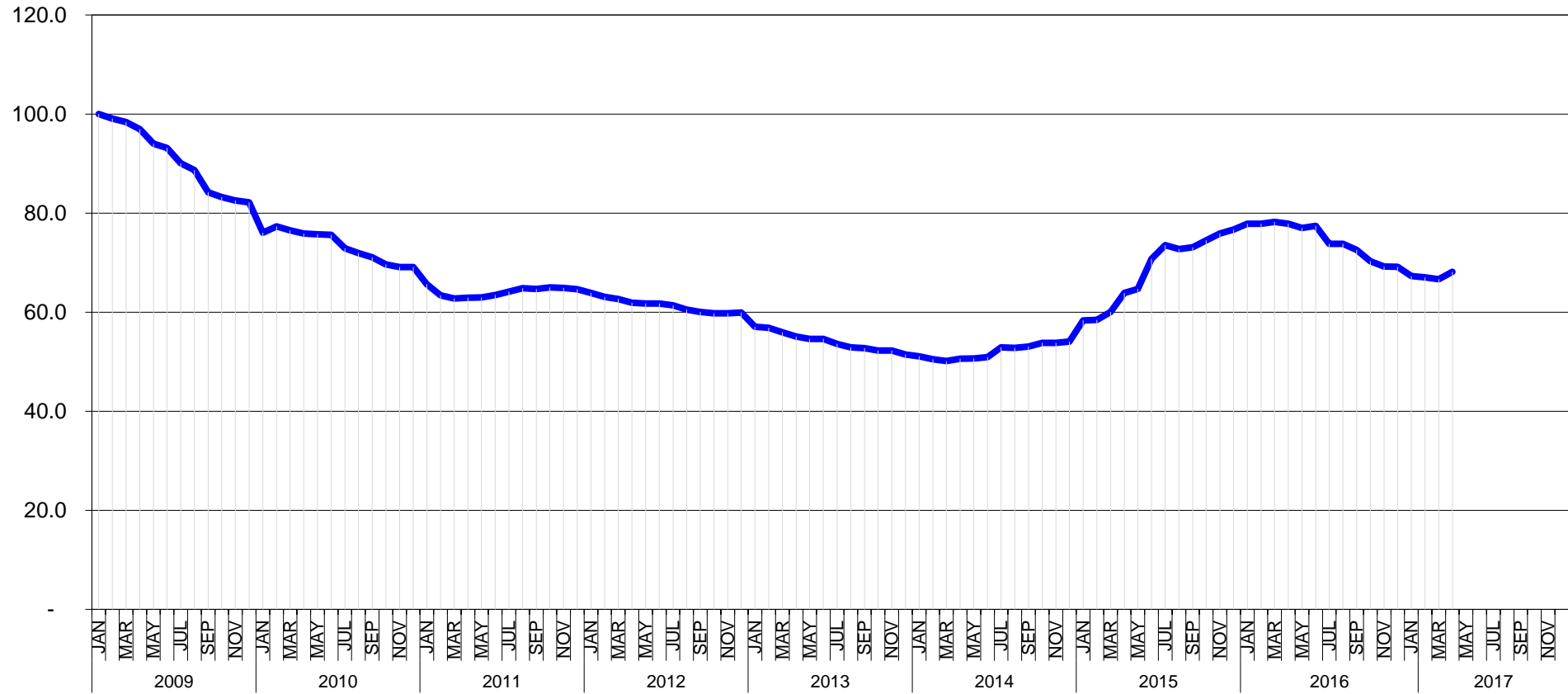


Following a mistake detected during an internal routine audit for an input to the GOES+ index, the values and corresponding graph have been amended.

- ALUMINIUM
- COPPER
- CONV. GOES
- MIN. OIL
- PAPER
- COLD STEEL
- HOT STEEL
- GOES+

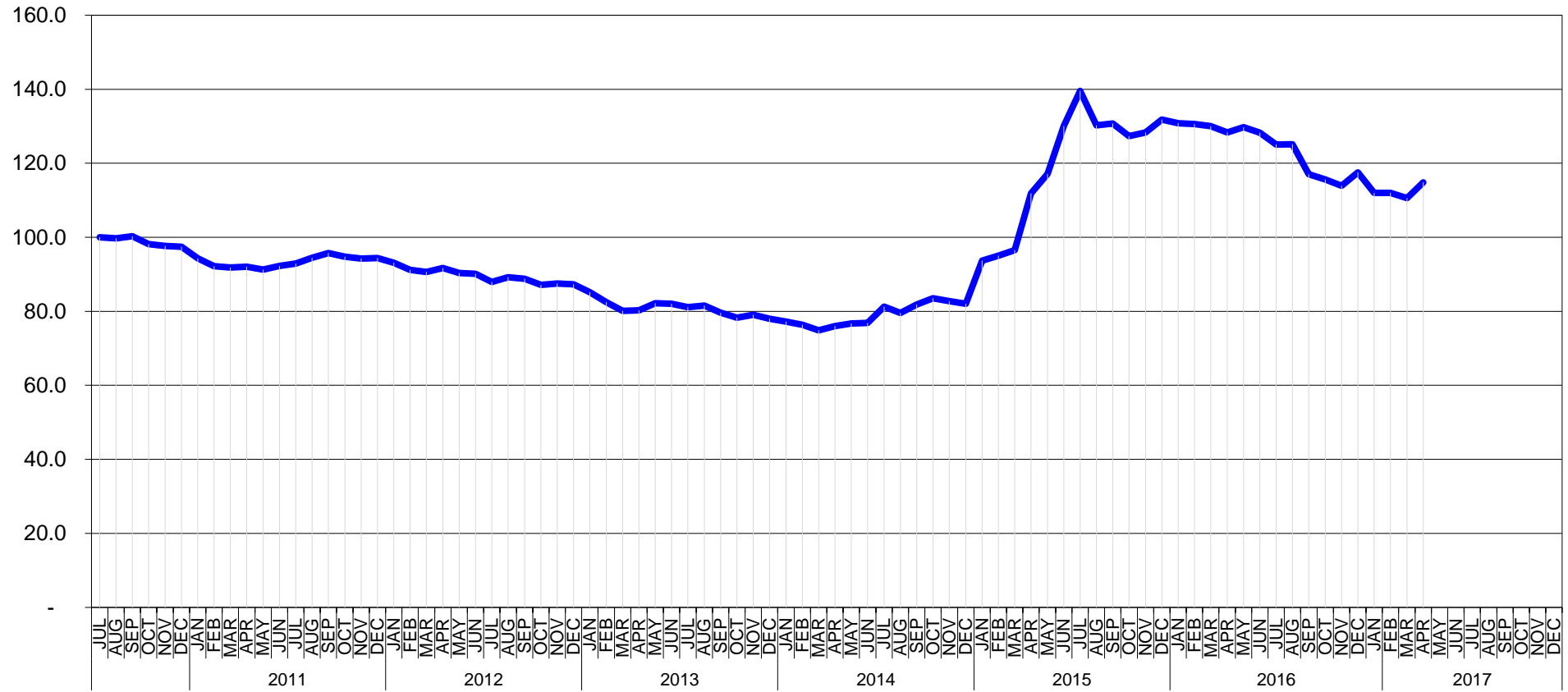
T&D EUROPE
CONVENTIONAL GOES
 BASIS JAN 2009 = 100

- Provisional
- Complete
- Amended



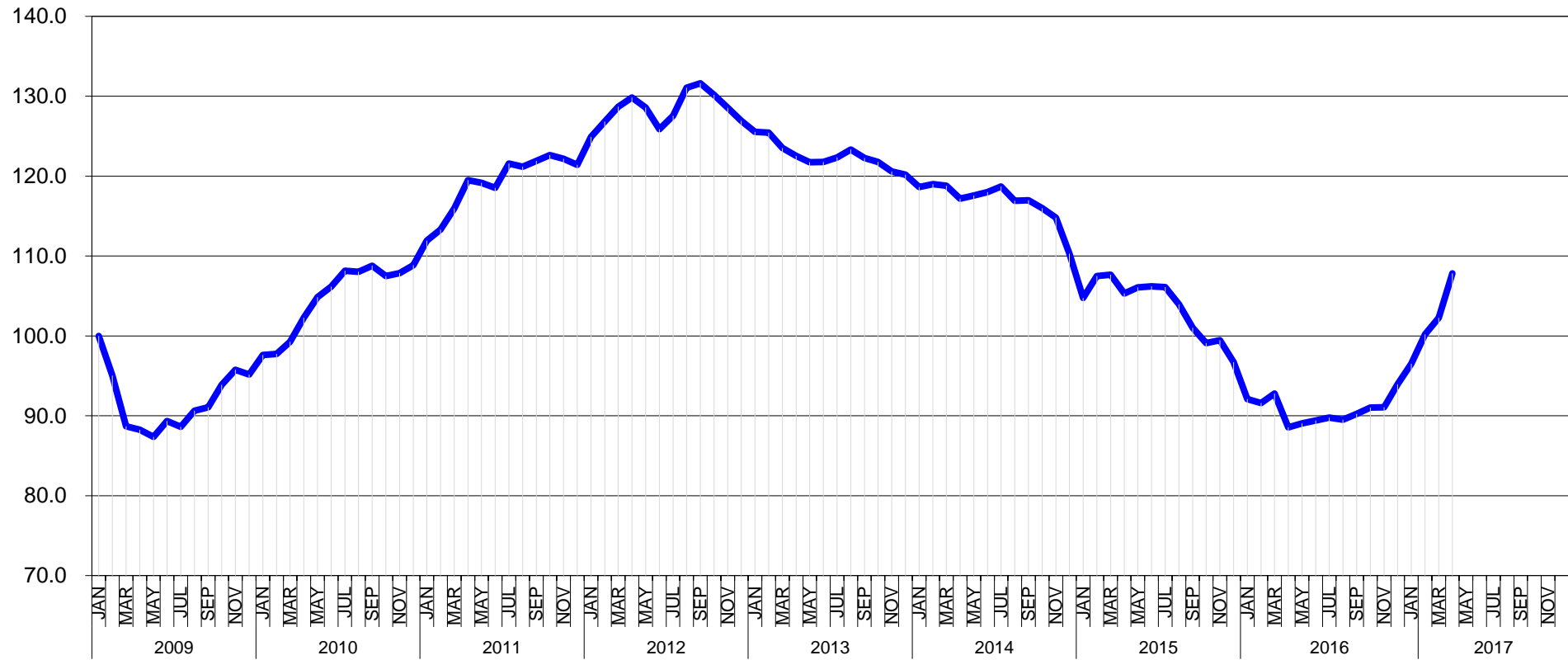
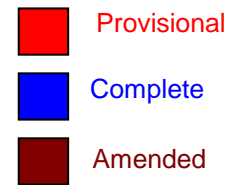
T&D EUROPE
GOES+
 BASIS JUL 2010 = 100

- Provisional
- Complete
- Amended



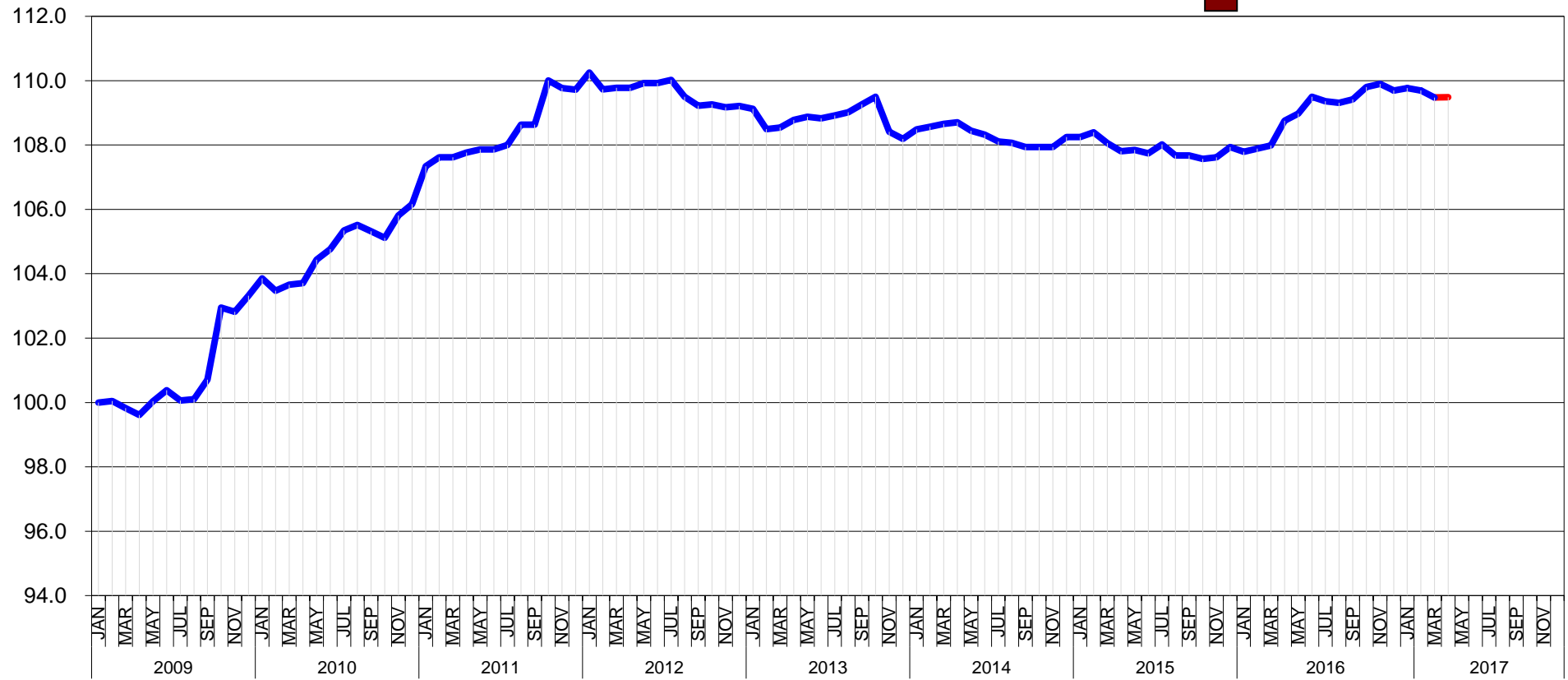
Following a mistake detected during an internal routine audit for an input to the GOES+ index, the values and corresponding graph have been amended.

T&D EUROPE
MINERAL OIL
 BASIS JAN 2009 = 100



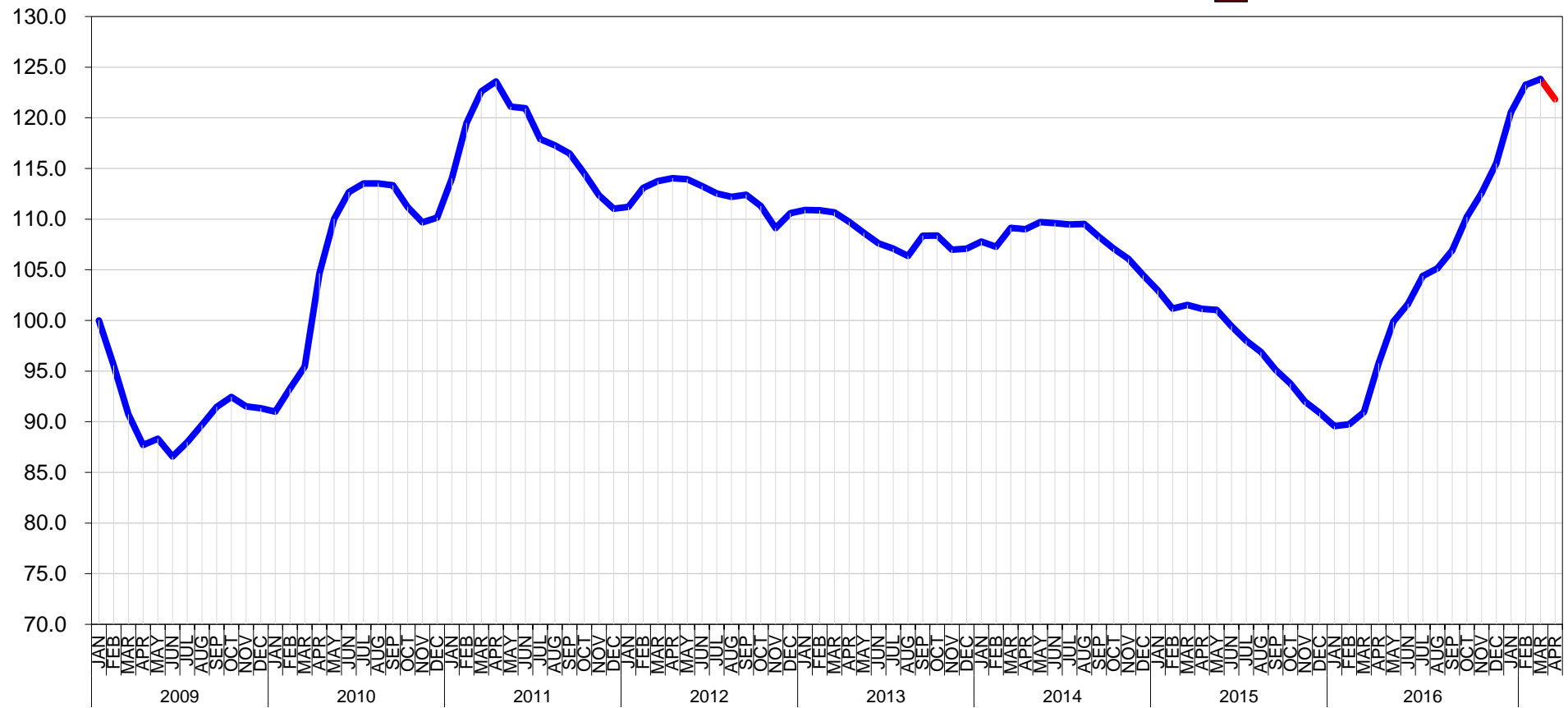
T&D EUROPE
PAPER
 BASIS JAN 2009 = 100

- Provisional
- Complete
- Amended



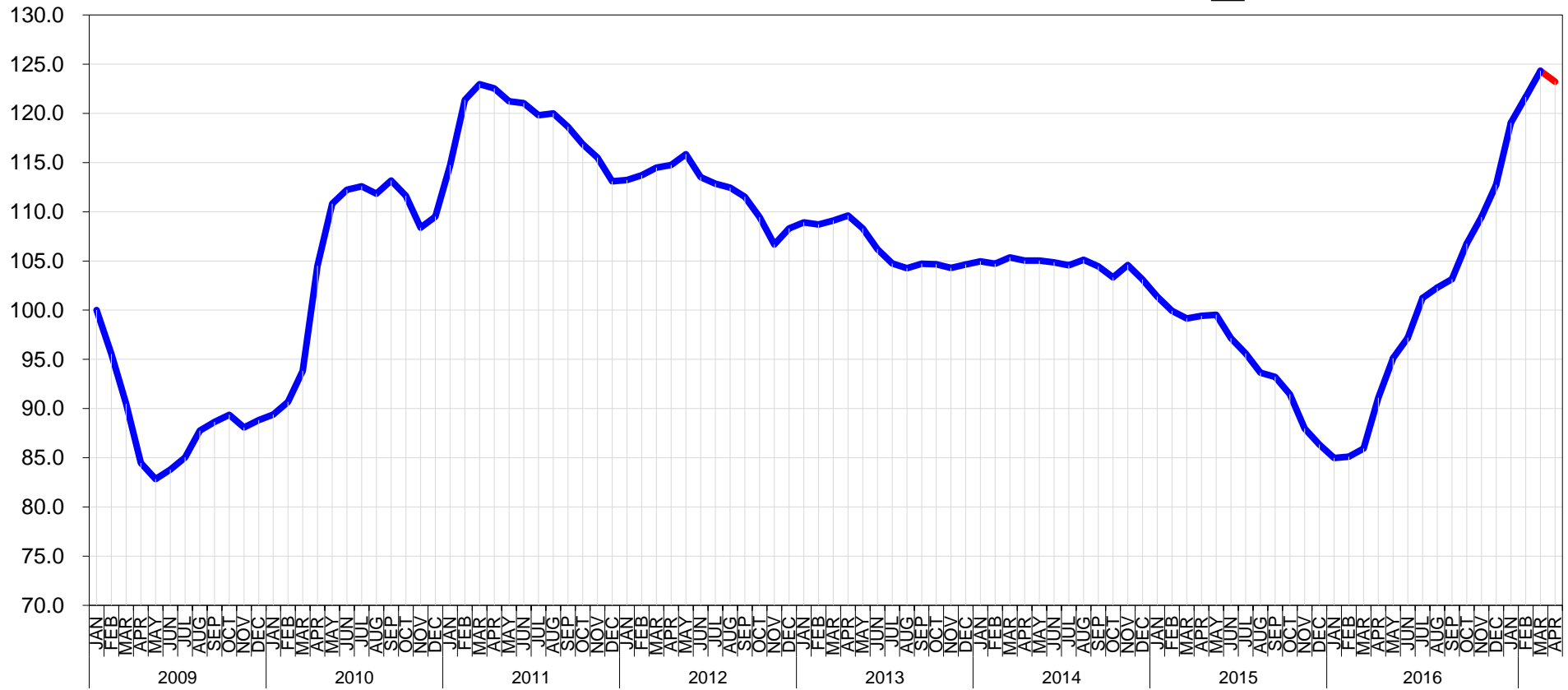
T&D EUROPE
COLD STEEL
 BASIS JAN 2009 = 100

- Provisional
- Complete
- Amended



T&D EUROPE
HOT STEEL
 BASIS JAN 2009 = 100

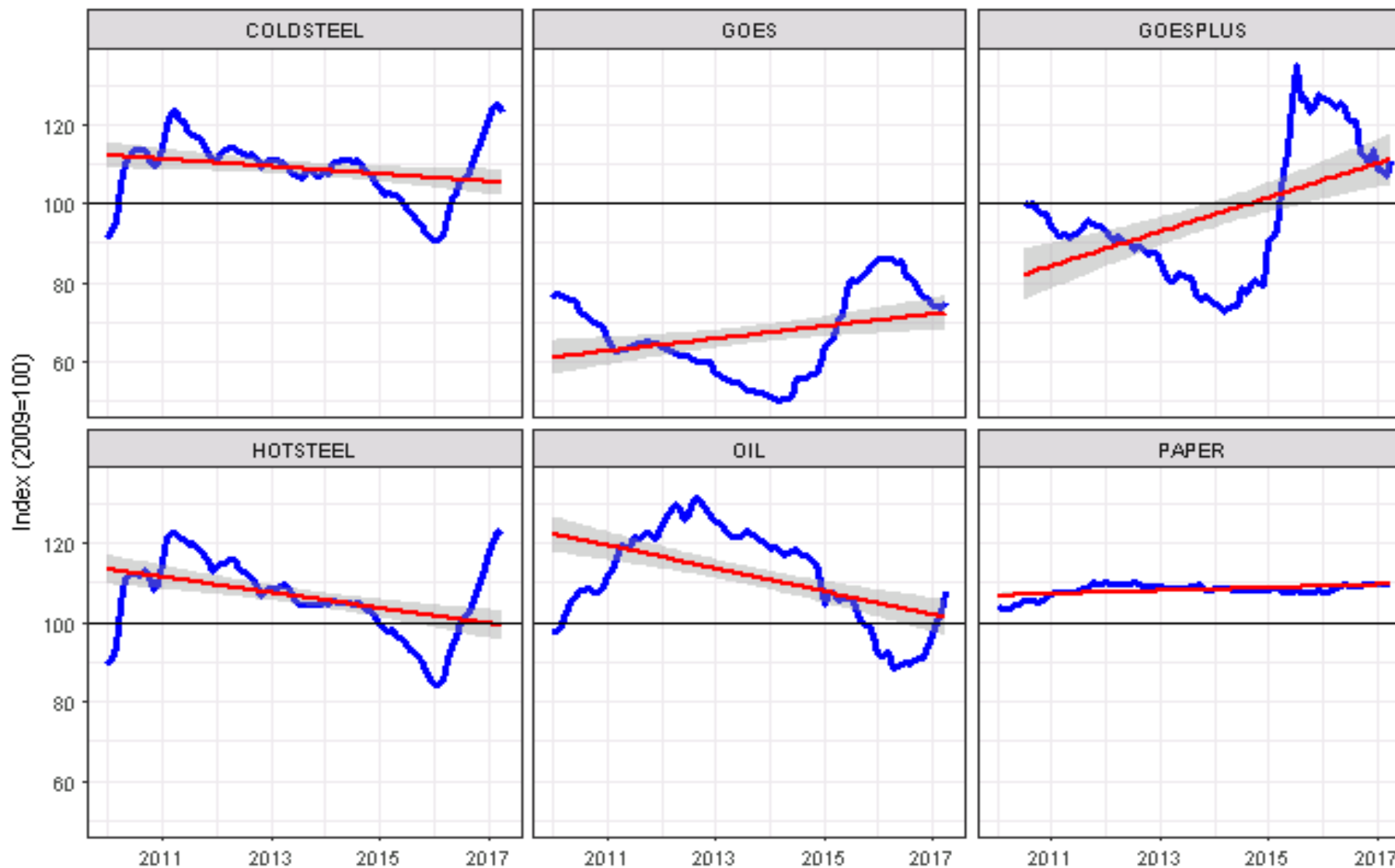
- Provisional
- Complete
- Amended



T & D Europe

TRANSFORMER COMMODITY INDICIES

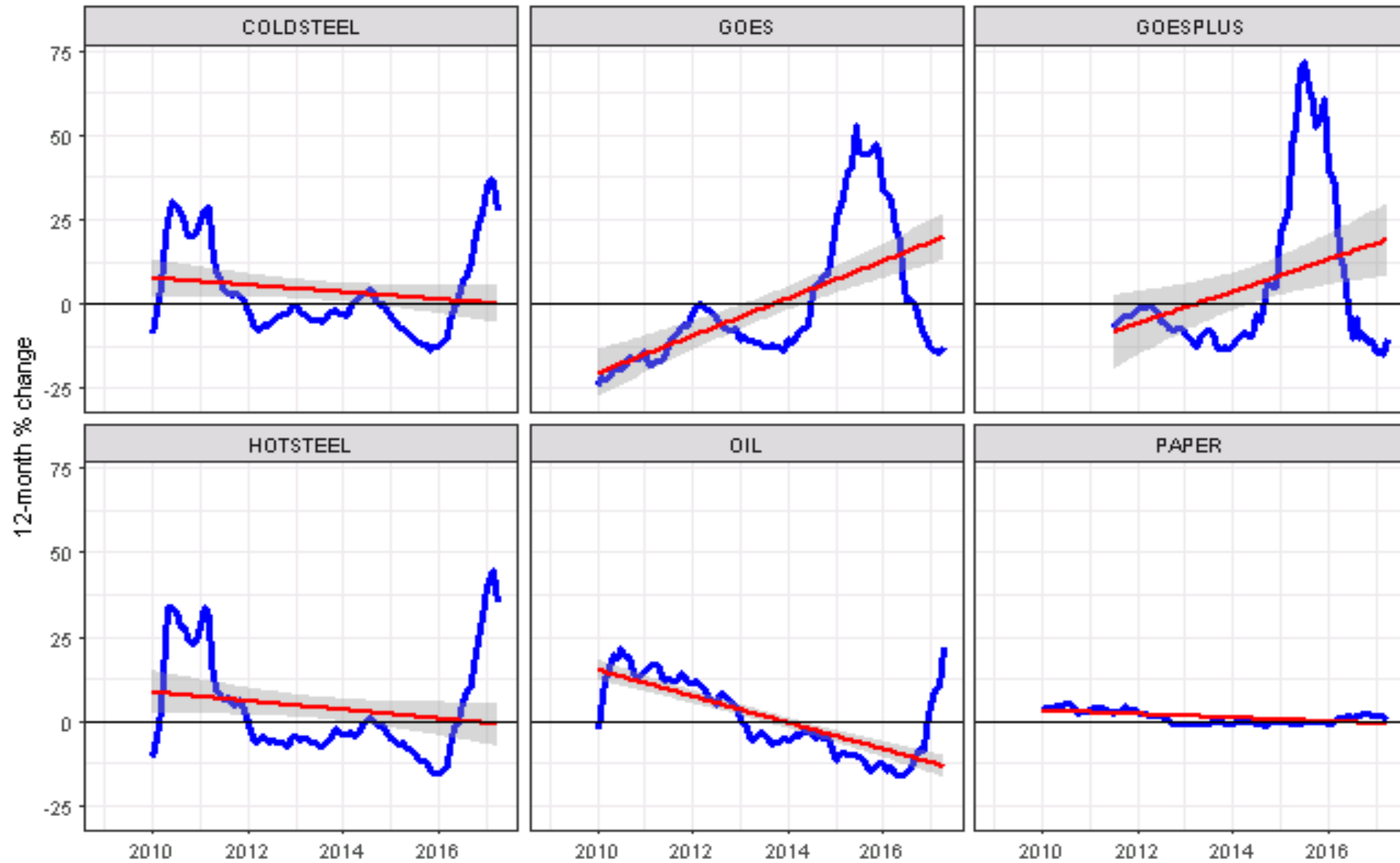
DASHBOARD - Indices (Jan 2009 = 100 except GOES PLUS)



T & D Europe

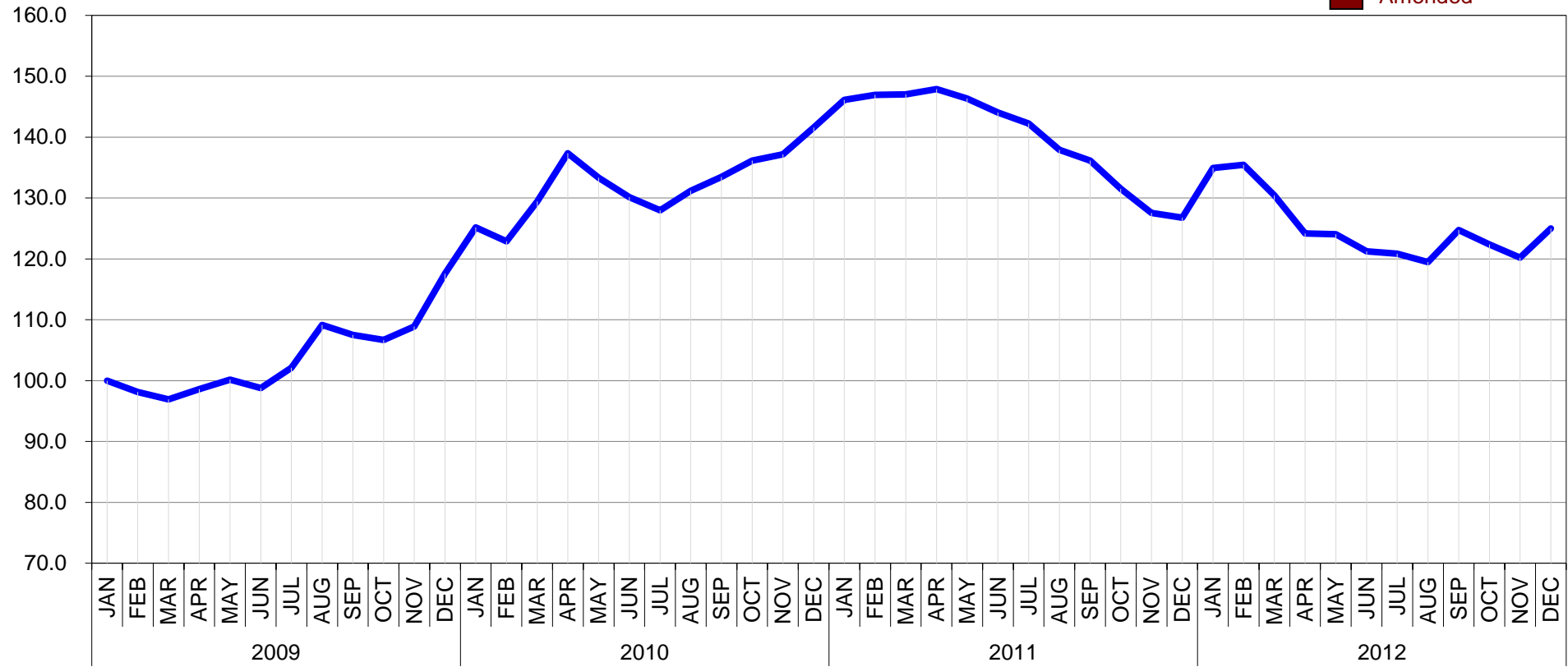
TRANSFORMER COMMODITY INDICIES

DASHBOARD : Year-on-Year % Change (on single month)



T&D EUROPE
ALUMINIUM
 BASIS JAN 2009 = 100

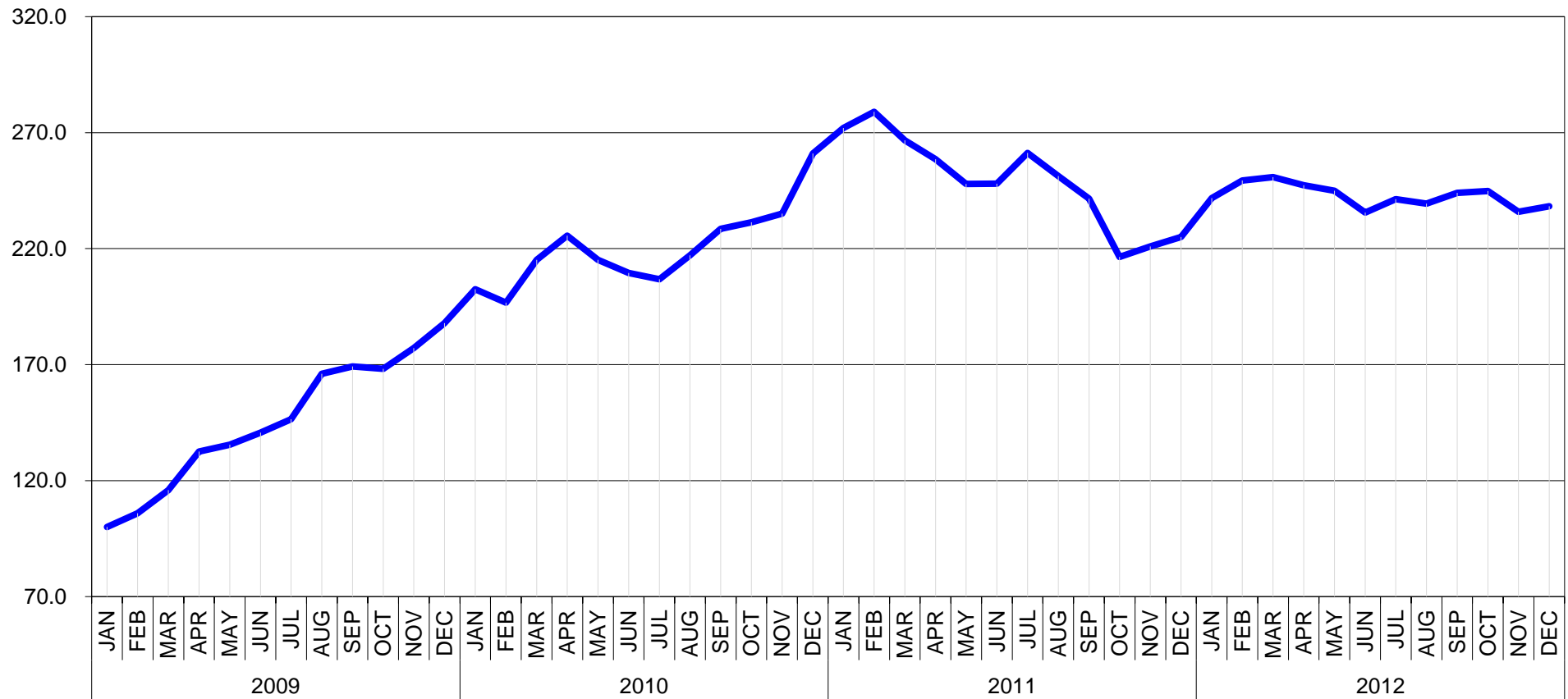
- Provisional
- Complete
- Amended



We have stopped publishing the **Aluminium index** after December 2012, as information is readily available from other sources.

T&D EUROPE
COPPER
 BASIS JAN 2009 = 100

- Provisional
- Complete
- Amended



We have stopped publishing the **Copper index** after December 2012, as information is readily available from other sources.