



TRANSFORMER COMMODITIES INDICES

MONTHLY

STATISTICS

FOR THE PERIOD

January 2009 - August 2022

PUBLICATION DATE: 3 OCTOBER 2022

The indices are published monthly, usually in the last week of the month following the month of reference in compliance with EU market statistical rules (e.g. data for September 2021, is published in the last week October 2021). The indices for paper, cold steel and hot steel are lagging one month behind as these are based on data from national statistical offices, which become available after the deadline for the T&D Europe indices.

IMPORTANT

In April 2020, the December 2019 - March 2020 indices for GOES High Grade have been updated due to a change in the number of reporting organisations.

We have stopped publishing the **Aluminium and Copper indices** after December 2012, as information

is readily available from other sources.

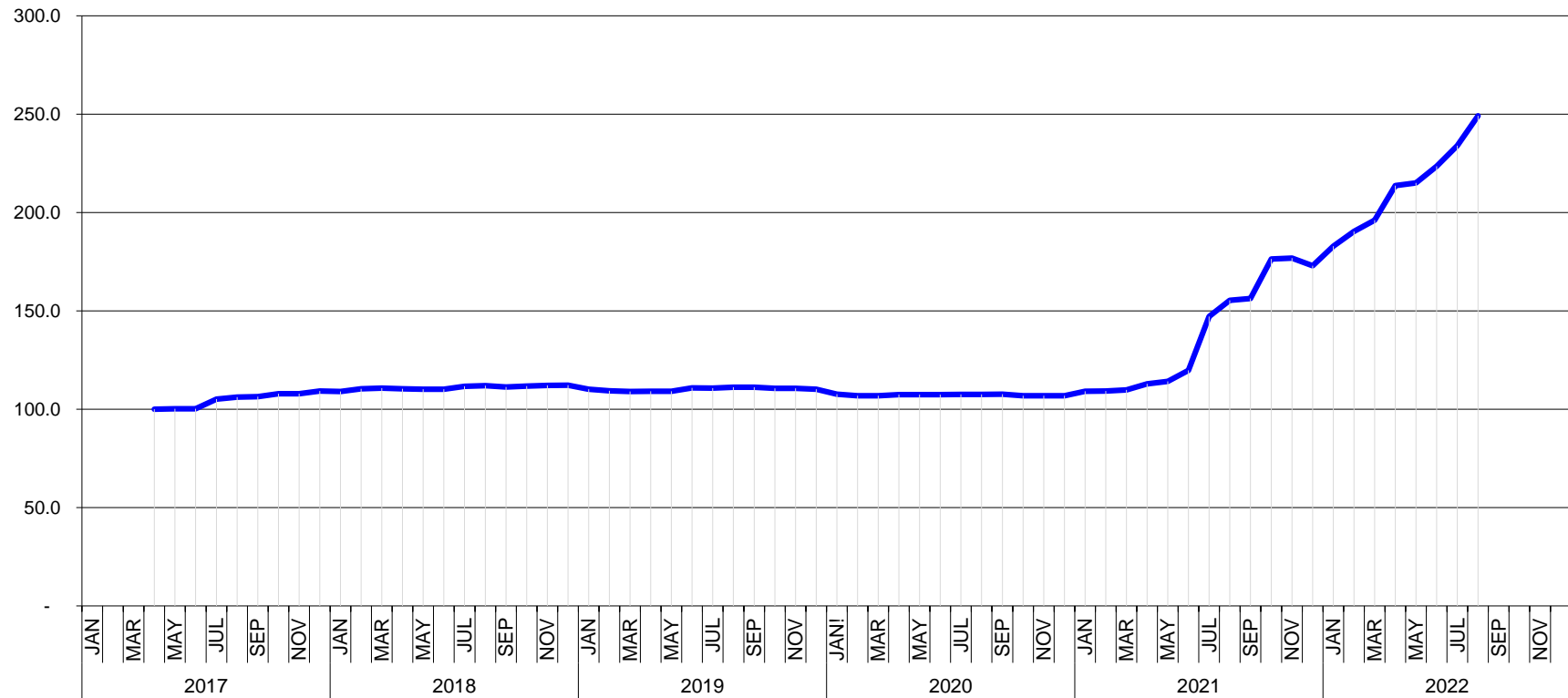
T&D EUROPE							
TRANSFORMER COMMODITY INDICES							
BASE APR-2017 = 100 [Goes Conv., Goes High Grade, Goes Super High Grade, Mineral Oil]							
! The number of reporting organisations has changed and a linking factor has been applied to the series.							
	GOES CONV.	GOES HIGH GRADE	GOES SUPER HIGH GRADE	MIN. OIL	PAPER	COLD STEEL	HOT STEEL
2009	JAN				100.0	100.0	100.0
	FEB				100.0	95.6	95.5
	MAR				99.8	90.7	90.5
	APR				99.6	87.7	84.5
	MAY				100.0	88.3	82.8
	JUN				100.4	86.6	83.8
	JUL				100.1	88.0	85.0
	AUG				100.1	89.7	87.8
	SEP				100.7	91.5	88.6
	OCT				102.9	92.5	89.4
	NOV				102.8	91.5	88.1
	DEC				103.3	91.3	88.8
2010	JAN				103.9	91.0	89.4
	FEB				103.5	93.3	90.7
	MAR				103.7	95.4	93.8
	APR				103.7	104.7	104.5
	MAY				104.4	110.0	110.8
	JUN				104.8	112.7	112.2
	JUL				105.3	113.5	112.6
	AUG				105.5	113.5	111.8
	SEP				105.3	113.3	113.2
	OCT				105.1	111.2	111.6
	NOV				105.8	109.7	108.4
	DEC				106.2	110.1	109.5
2011	JAN				107.3	114.0	114.7
	FEB				107.6	119.5	121.4
	MAR				107.6	122.6	123.0
	APR				107.8	123.6	122.5
	MAY				107.9	121.1	121.2
	JUN				107.9	120.9	121.0
	JUL				108.0	117.9	119.8
	AUG				108.6	117.3	120.0
	SEP				108.6	116.5	118.6
	OCT				110.0	114.5	116.9
	NOV				109.8	112.3	115.5
	DEC				109.7	111.0	113.1
2012	JAN				110.3	111.2	113.2
	FEB				109.7	113.1	113.7
	MAR				109.8	113.8	114.5
	APR				109.8	114.0	114.8
	MAY				109.9	113.9	115.9
	JUN				109.9	113.3	113.5
	JUL				110.0	112.5	112.9
	AUG				109.5	112.2	112.5
	SEP				109.2	112.4	111.5
	OCT				109.3	111.3	109.5
	NOV				109.2	109.1	106.7
	DEC				109.2	110.6	108.3
2013	JAN				109.1	110.9	108.9
	FEB				108.5	110.9	108.7
	MAR				108.5	110.7	109.1
	APR				108.8	109.7	109.6
	MAY				108.9	108.6	108.3
	JUN				108.8	107.6	106.2
	JUL				108.9	107.1	104.8
	AUG				109.0	106.4	104.3
	SEP				109.3	108.3	104.7
	OCT				109.5	108.4	104.7
	NOV				108.4	107.0	104.3
	DEC				108.2	107.1	104.6
2014	JAN				108.5	107.8	105.0
	FEB				108.6	107.3	104.7
	MAR				108.7	109.1	105.4
	APR				108.7	109.0	105.0
	MAY				108.4	109.7	105.0
	JUN				108.3	109.6	104.8
	JUL				108.1	109.5	104.6
	AUG				108.1	109.5	105.1
	SEP				107.9	108.2	104.4
	OCT				107.9	107.1	103.3
	NOV				107.9	106.1	104.6
	DEC				108.2	104.5	103.1
2015	JAN				108.3	103.0	101.4
	FEB				108.4	101.2	99.9
	MAR				108.1	101.5	99.2
	APR				107.8	101.1	99.4
	MAY				107.9	101.0	99.5
	JUN				107.7	99.4	97.2
	JUL				108.0	98.0	95.6
	AUG				107.7	96.9	93.6
	SEP				107.7	95.1	93.2
	OCT				107.6	93.8	91.5
	NOV				107.6	92.0	88.0
	DEC				107.9	90.9	86.3
2016	JAN				107.8	89.6	85.0
	FEB				107.9	89.7	85.1
	MAR				108.0	90.9	85.9
	APR				108.8	95.8	91.1
	MAY				109.0	99.9	95.1
	JUN				109.5	101.6	97.2
	JUL				109.4	104.4	101.2
	AUG				109.3	105.1	102.3
	SEP				109.4	106.9	103.2
	OCT				109.8	110.2	106.8
	NOV				109.9	112.6	109.5
	DEC				109.7	115.5	112.8
JAN				109.8	120.6	119.0	

! Due to an insufficient number of respondents, we are not able to provide the High Grade indices

T&D EUROPE							
TRANSFORMER COMMODITY INDICES							
BASE APR-2017 = 100 [Goes Conv., Goes High Grade, Goes Super High Grade, Mineral Oil]							
number of reporting organisations has changed and a linking factor has been applied to the series.							
	GOES CONV.	GOES HIGH GRADE	GOES SUPER HIGH GRADE	MIN. OIL	PAPER	COLD STEEL	HOT STEEL
2017	FEB				109.7	123.3	121.7
	MAR				109.5	123.8	124.3
	APR	100.000	100.000	100.000	100.000	109.500	121.800
	MAY	100.163	100.000	99.378	101.734	109.665	120.519
	JUN	100.235	98.979	99.412	101.080	109.673	119.865
	JUL	105.145	98.013	100.828	98.896	110.000	119.348
	AUG	106.172	97.843	99.390	98.620	110.000	120.707
	SEP	106.435	97.843	99.317	98.286	109.999	121.160
	OCT	107.814	96.028	99.326	95.043	110.222	121.249
	NOV	107.878	96.028	99.160	95.673	110.649	121.472
	DEC	109.272	96.028	100.098	96.045	110.759	121.194
	2018	JAN	109.007	95.216	99.302	100.808	111.458
FEB		110.347	97.141	98.774	101.875	111.890	125.712
MAR		110.663	97.139	99.916	101.427	112.269	125.992
APR		110.378	97.047	99.745	101.371	112.588	126.281
MAY		110.115	97.047	99.705	102.369	112.918	127.249
JUN		110.188	97.217	100.370	102.766	113.355	127.332
JUL		111.646	98.734	99.968	108.084	113.517	127.625
AUG		111.985	99.572	99.947	107.179	113.407	127.902
SEP		111.325	99.234	99.853	107.373	113.459	128.167
OCT		111.700	99.245	100.027	110.128	113.788	128.984
NOV		112.119	99.245	100.212	110.257	114.280	125.242
DEC		112.228	98.229	100.636	110.368	114.335	124.156
2019	JAN	110.143	98.269	99.205	110.660	114.947	122.791
	FEB	109.353	98.268	99.425	110.470	115.582	123.407
	MAR	108.991	98.406	99.146	110.334	115.525	125.242
	APR	109.069	98.439	99.396	104.816	115.733	123.038
	MAY	109.101	98.277	99.580	104.613	115.634	122.054
	JUN	110.869	98.612	99.070	104.345	115.381	122.647
	JUL	110.695	98.541	98.539	107.540	115.480	123.374
	AUG	111.183	98.541	99.284	106.875	115.436	123.933
	SEP	111.173	98.378	99.141	106.875	115.535	124.649
	OCT	110.630	96.123	99.192	105.139	115.326	122.725
	NOV	110.641	96.123	99.559	103.939	115.183	120.119
	DEC	110.186	96.114	100.365	104.160	115.073	120.219
2020	JAN	107.583	95.845	99.427	104.881	114.876	122.949
	FEB	106.867	96.344	99.121	104.871	114.876	125.992
	MAR	106.835	96.444	99.029	102.664	114.711	124.727
	APR	107.421	97.126	99.033	100.799	115.304	121.819
	MAY	107.421	97.126	99.518	100.217	115.249	121.304
	JUN	107.431	97.126	99.039	98.019	114.996	119.805
	JUL	107.507	97.126	98.814	89.782	114.887	119.087
	AUG	107.507	97.126	99.855	85.894	114.832	120.488
	SEP	107.659	97.126	99.059	79.845	115.040	126.819
	OCT	106.857	96.406	98.549	82.089	115.194	129.359
	NOV	106.857	96.406	97.631	83.733	115.084	132.256
	DEC	106.857	96.406	97.978	84.342	115.557	139.907
2021	JAN	109.112	97.958	98.345	89.329	115.997	156.139
	FEB	109.210	97.958	98.814	89.819	116.415	164.808
	MAR	109.828	97.958	98.386	87.685	116.843	175.155
	APR	112.843	102.210	99.478	93.983	117.261	194.071
	MAY	114.176	104.566	101.028	99.100	119.064	204.531
	JUN	119.772	114.128	105.252	100.180	120.119	211.008
	JUL	147.077	138.935	131.229	104.761	121.702	231.937
	AUG	155.318	155.801	134.473	107.808	123.879	233.783
	SEP	156.294	157.508	134.718	108.279	126.198	235.651
	OCT	176.323	157.938	136.412	113.654	127.363	236.923
	NOV	176.790	159.050	137.769	115.418	130.013	240.331
	DEC	172.886	159.630	139.739	115.468	130.068	235.114
2022	JAN	182.828	168.341	154.287	127.012	132.882	229.342
	FEB	190.394	171.295	158.117	128.531	135.080	233.447
	MAR	196.117	182.895	167.738	129.686	136.597	253.460
	APR	213.674	n/a !!	175.313	150.547	142.907	284.278
	MAY	215.041	n/a !!	179.641	159.219	143.006	275.575
	JUN	223.517	n/a !!	181.771	160.401	144.380	253.907
	JUL	234.014	n/a !!	192.403	181.641	144.963	225.147
	AUG	249.154	n/a !!	205.844	178.159		
	SEP						
	OCT						
	NOV						
	DEC						
2023	JAN						
	FEB						
	MAR						
	APR						
	MAY						
	JUN						
	JUL						
	AUG						
	SEP						
	OCT						
	NOV						
	DEC						

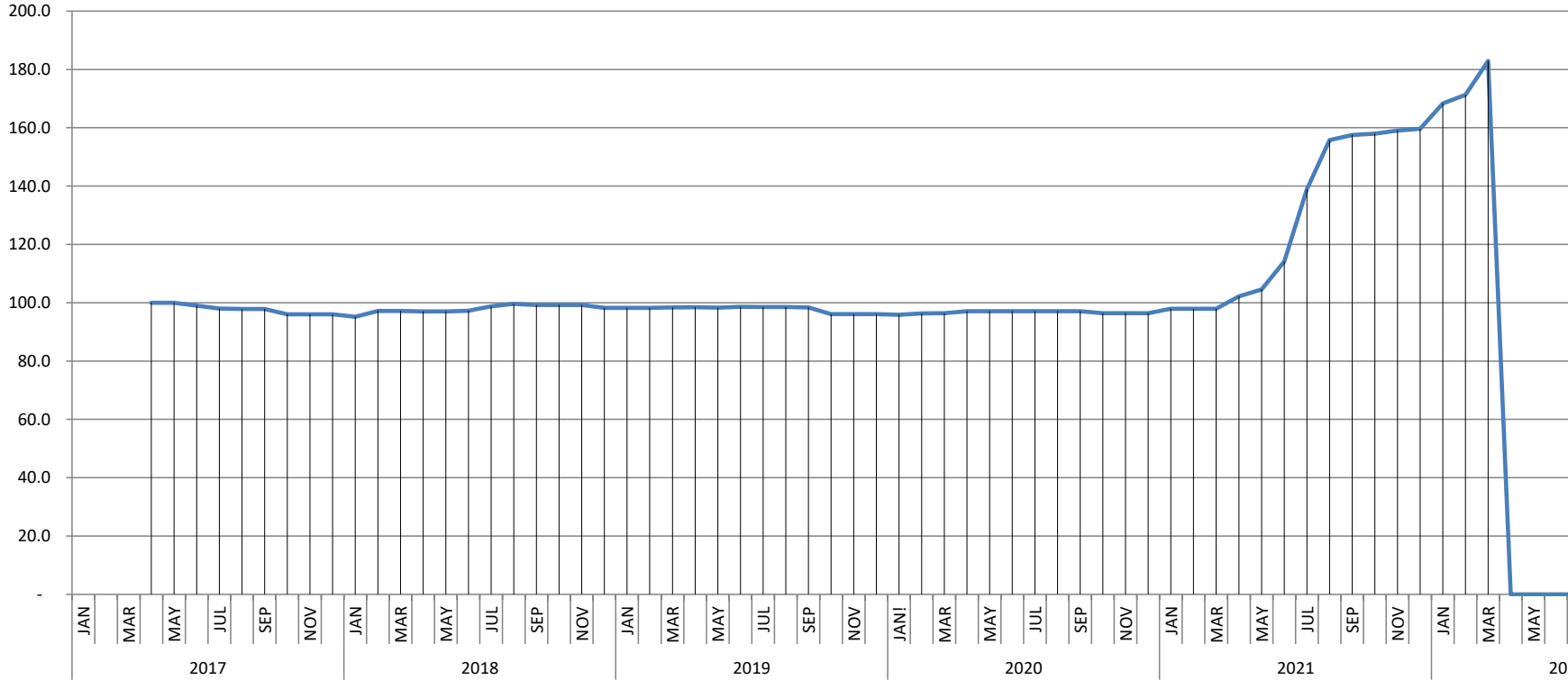
T&D EUROPE
GOES CONV.
BASIS APR 2017 = 100

- Provisional
- Complete
- Amended



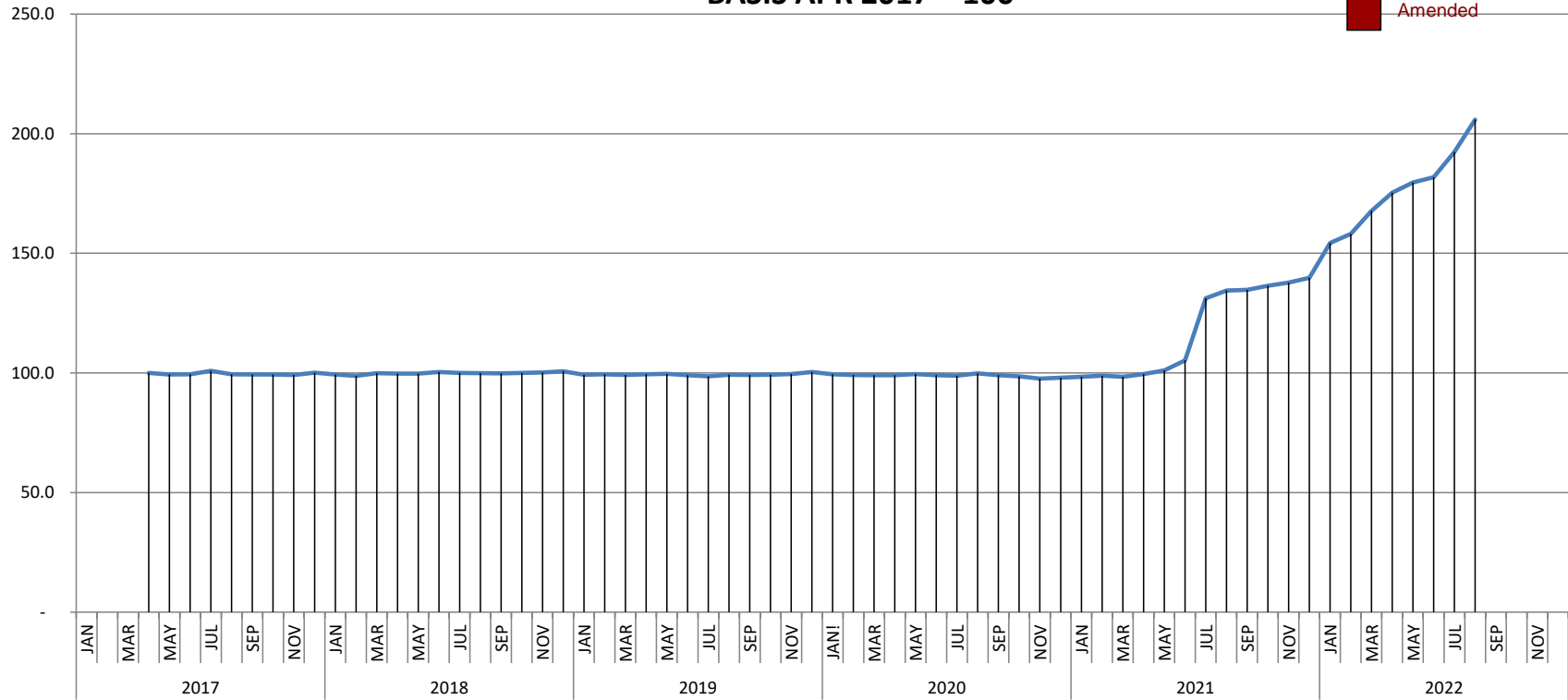
**T&D EUROPE
GOES HIGH GRADE
BASIS APR 2017 = 100**

- Provisional
- Complete
- Amended



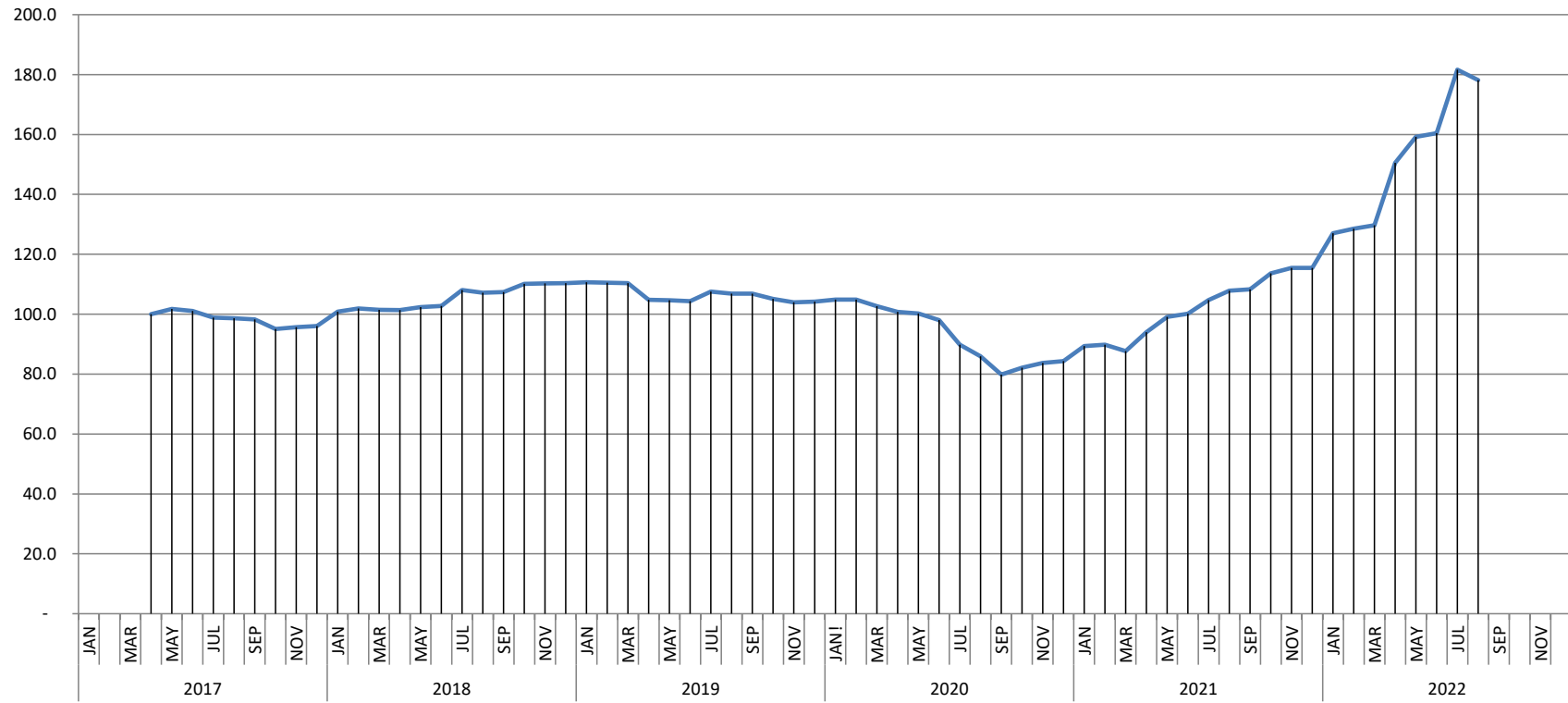
**T&D EUROPE
GOES SUPER HIGH GRADE
BASIS APR 2017 = 100**

- Provisional
- Complete
- Amended



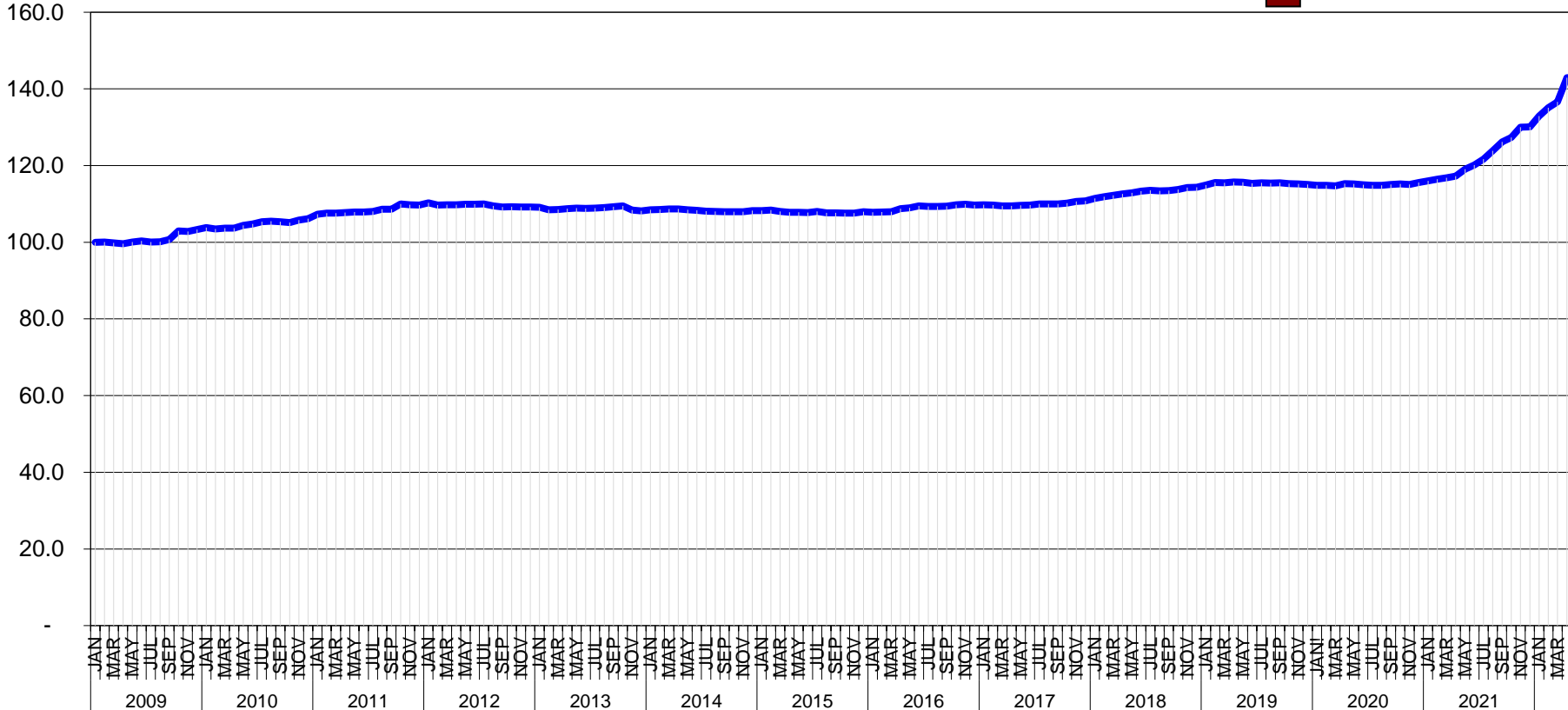
T&D EUROPE MINERAL OIL BASIS APR 2017 = 100

- Provisional
- Complete
- Amended



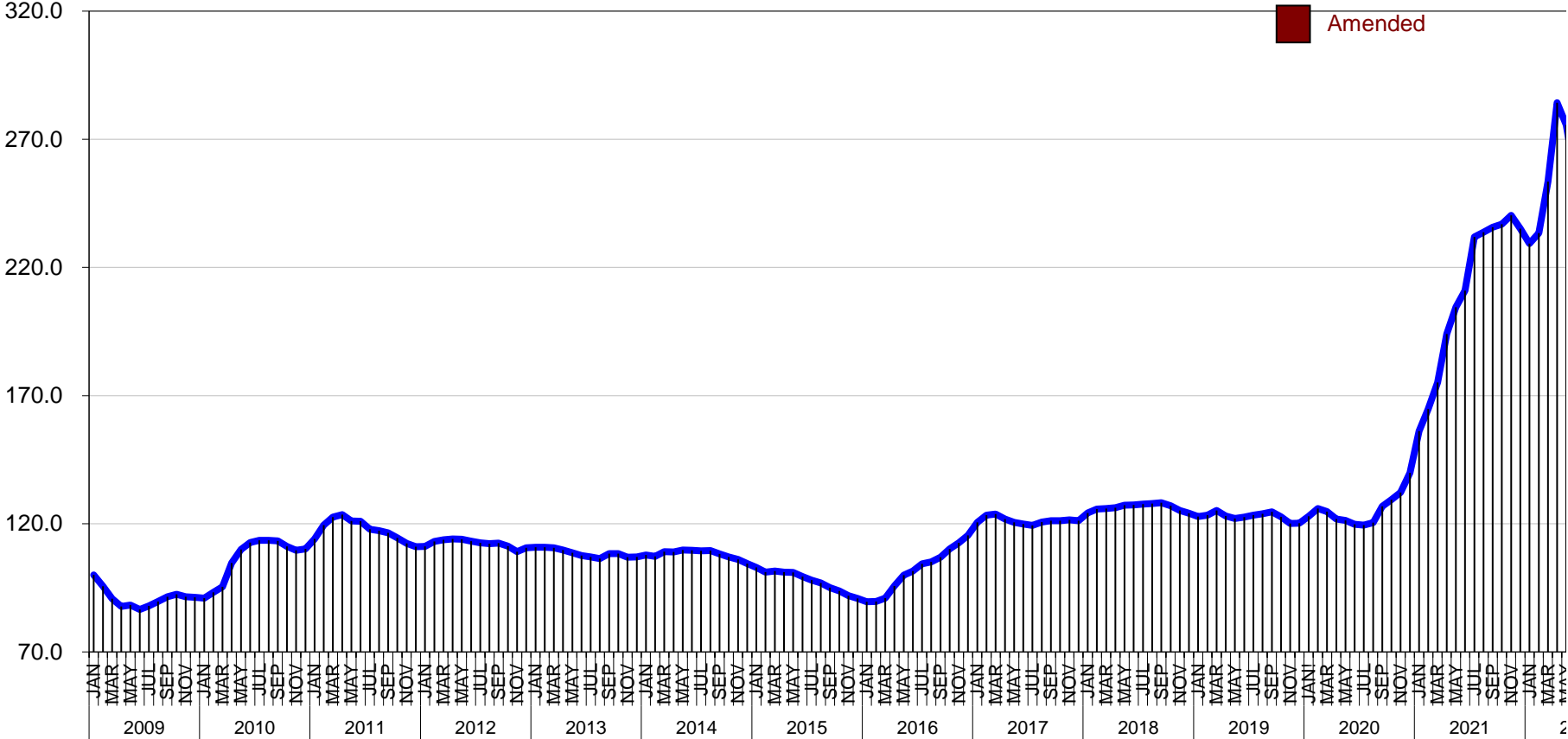
T&D EUROPE
PAPER
BASIS JAN 2009 = 100

- Provisional
- Complete
- Amended



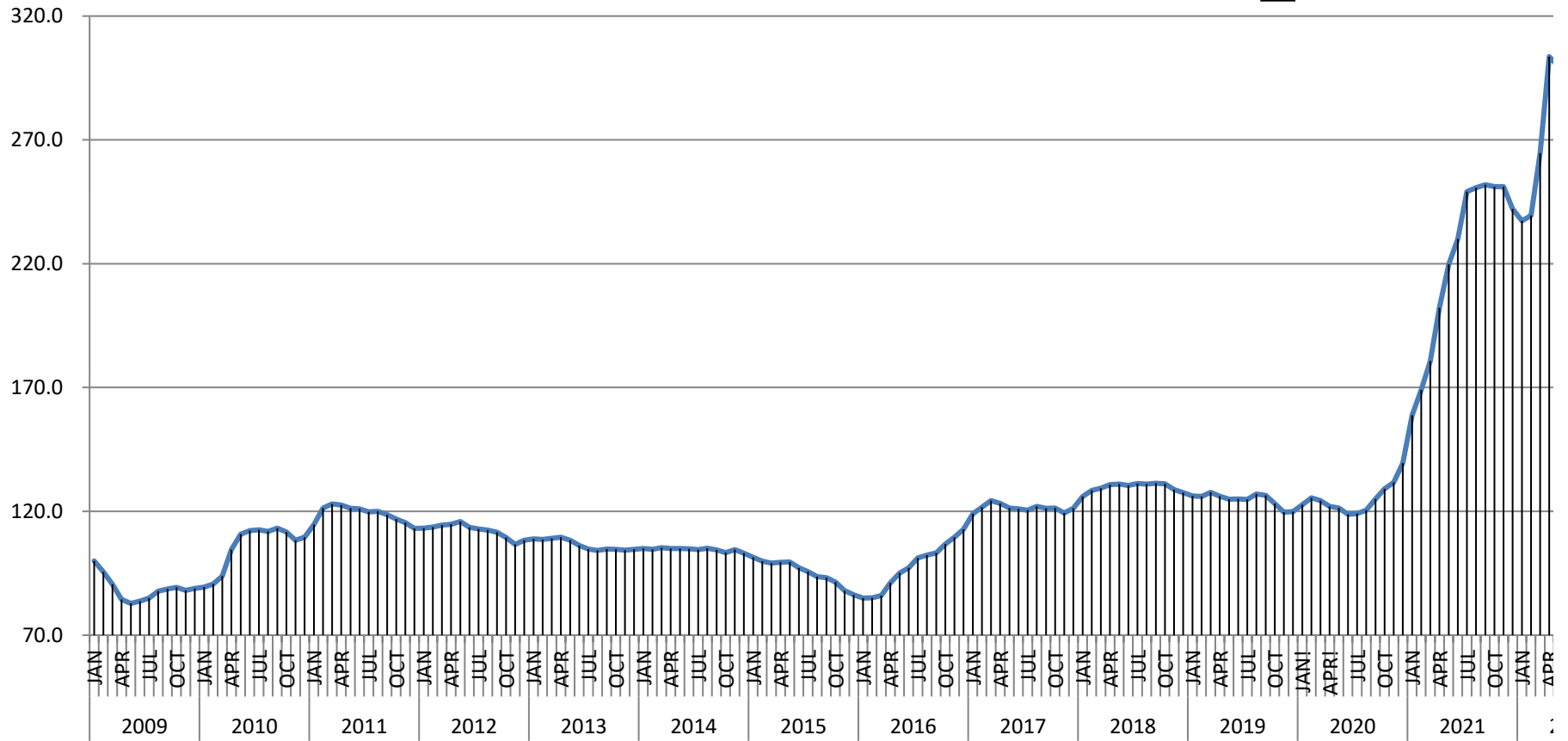
T&D EUROPE
COLD STEEL
BASIS JAN 2009 = 100

- Provisional
- Complete
- Amended



T&D EUROPE HOT STEEL BASIS JAN 2009 = 100

- Provisional
- Complete
- Amended



January 2009 -August 2022

PUBLICATION DATE: 3 October 2022